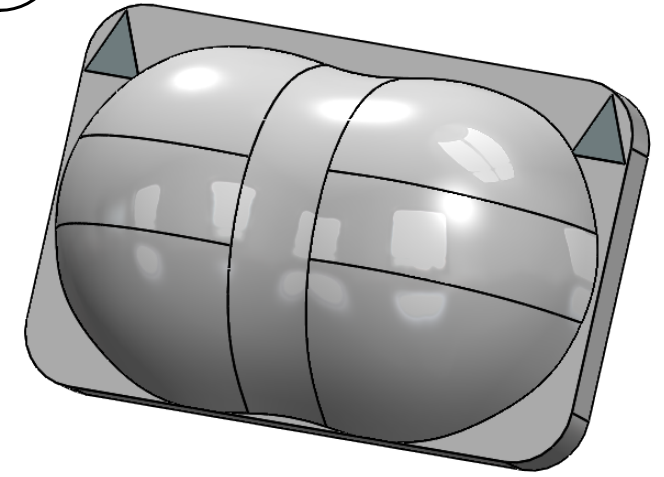
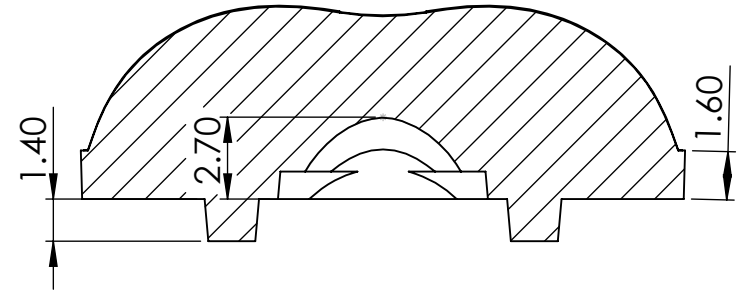


**SECTION A-A**  
SCALE 4 : 1



**GENERAL INFORMATION:-**  
 General Information  
 1. Lens material - Optical PC  
 2. Operating Temperature range  $-40^{\circ} \sim +110^{\circ}$   
 (Upper Limit  $+130^{\circ}$ )  
 3. Storage Temperature range  $-40^{\circ} \sim +110^{\circ}$  (Upper  
 Limit  $+130^{\circ}$  C)  
 Average transmittance in visible spectrum 400nm-  
 700nm > 90%  
 Usage and Maintenance:  
 1. If necessary, clean lenses with mild soap, water  
 and soft cloth.  
 2. Never use any commercial cleaning solvents  
 like Alcohol.  
 3. Handel and install lenses with wearing gloves,  
 skin oils may  
 Damage lenses or its optical characteristics.

**Open Tolrence  $\pm 0.2\text{mm}$**

UNLESS OTHERWISE SPECIFIED: DIMENSIONS ARE IN MILLIMETERS SURFACE FINISH: TOLERANCES: LINEAR: ANGULAR:		DEBURR AND BREAK SHARP EDGES	DO NOT SCALE DRAWING	REVISION
<b>OPTIKS KARKHANA INDIA PVT. LTD.</b>				
DRAWN	<b>Pradyumna Shandilya</b>	SIGNATURE	DATE	Part Name:- <b>Single Batwing</b>
CHK'D	<b>Kapil Kaushik</b>		07/10/2019	Drawing Number:- <b>OKIPL-0157 Rev.00</b>
APPV'D	<b>Kapil Kaushik</b>		07/10/2019	
MATERIAL: <b>POLYCARBONATE</b>			Part Number:- <b>OK157-3535-1x1</b>	A4
WEIGHT:			SCALE:2:1	SHEET 1 OF 1